

101

C O P E N H A G E N



Ghost Chandelier, Mini - Neon (5m)

Designed by

Kristian Sofus Hansen &
Tommy Hyldahl

Ghost Chandelier, Mini - Neon (5m)

Product Description

Drawing inspiration from minimalist art, the Ghost Chandelier seamlessly melds light with sculpture, embodying a graphic lighting aesthetic.

The Ghost's defining feature is its radiant white acrylic tube, which flows in various directions, forging an ambient illumination reminiscent of organic patterns. Originating from a hand sketch, the design infuses spaces with an artistic and graphic ambiance. Its ever-evolving appearance captivates observers, morphing into diverse patterns and forms depending on one's vantage point.

In any setting, Ghost asserts itself as a centrepiece. The Ghost Chandelier incorporates an inbuilt LED light. This series highlights the luminous white acrylic tube that encases a durable LED light source, boasting an impressive 25,000 hours of illumination at a warm Kelvin 2400. Shifting away from the starkness typically associated with neon, these innovative lamps exude a warmer, more inviting glow, setting the ambiance for a cozy and comforting atmosphere. Bronze metal accents provides a refined finish to its minimalist design.

The handcrafted design of the Ghost Chandelier ensures that light distribution uniquely cascades along its curvaceous tubes, resulting in it to shine brighter in some part of its curved tube. Suspended by four adjustable stainless-steel wires, the chandelier can be set to the perfect height for any room. With a span of 116 cm, the Mini Ghost Chandelier is perfectly suited for hanging in pairs above a kitchen island, as a statement in a hallway, or placed alone over a dining table.

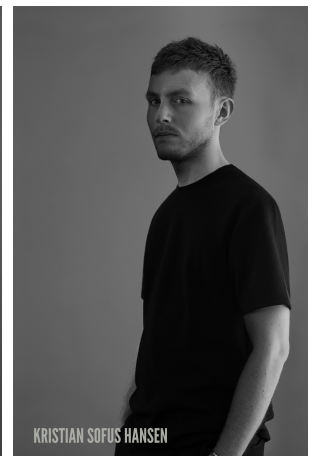
Designer Description

Tommy Hyldahl and Kristian Sofus Hansen intertwine their distinct sensibilities to create designs where storytelling, materiality, and timeless form meet in quiet harmony.

With a background in fashion, Tommy brings an intuitive eye for trends, colors, and textures. His process is one of layering histories, blending details and references from past design periods and reimagining them into something fresh and contemporary. Each collection unfolds as a narrative, evolving from concept to creation, with every element contributing to a greater story.

Kristian, who has lived and studied in Japan, seeks to unite Japanese aesthetics with Danish design, creating a characteristic twist on simplicity itself. His work is defined by the search for subtle, original details that elevate each piece with a unique signature. Drawing inspiration from art and sculpture, his creative process unfolds in new and exciting ways, always striving to craft designs that are both functional and timeless.

Together, they craft design that transcends time, poetic yet practical, expressive yet enduring.



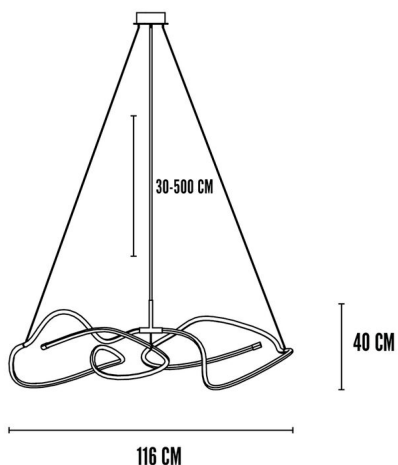
Ghost Chandelier, Mini - Neon (5m)

Main

SKU	249010	Product Family	Ghost
Product name	Ghost Chandelier, Mini - Neon (5m)	Color	Neon
Product Type	Chandelier	Size	Mini
		Unit	Piece

Logistics

EAN number	4251501413103	Package - CBM	0.162
Package height in cm	26.00	Package - Weight KG	9.740
Package width in cm	74.50	Tariff Code No	9405199090
Package length in cm	83.50	Country of origin	China
		Quantity of Inner Boxes	1



Ghost Chandelier, Mini - Neon (5m)

Product

Materials	Hand-brushed Aluminium & Acrylic	Light Source	SMD LED
Item Height in cm	38	Lighting Certification	CE-Certificate
Item width in cm	62	Cable Length	5 m
Item length in cm	116	Max Watt (W)	25
Net weight in kg	3.3	Socket	Built-in LED (non-replaceable)
Ceiling Cup Size	H4.5 / W18 Cm	IP Rating	20

Led

Color Temperature	2400	Lumen (lm)	1722
Energy Class	G	Illuminant Lifetime (h)	25000
EPREL No.	1624645	Driver Type	Built-in(isolated)

Ghost Chandelier, Mini - Neon (5m)

Family Description Text

A study in light and form, the Ghost Lighting series transforms illumination into sculpture. Inspired by minimalist art, each piece traces luminous lines through space like a hand-drawn sketch made three-dimensional, shifting with every perspective and unfolding into new patterns as you move around it.

At the core of every Ghost design, a radiant acrylic tube with an integrated LED guides light along fluid curves. Subtle variations emerge, brightening in some places and softening in others, creating an atmosphere that is both modern and warmly inviting. Unlike the starkness of neon, Ghost glows with an intimate warmth, drawing people closer into its embrace of light.

The series offers two distinct expressions. One, crafted entirely from luminous acrylic, feels pure and ethereal. The other pairs acrylic with aluminium, balancing radiance with structure, where glow meets gravity in a refined dialogue of material and light. Each celebrates the poetry of shadow, reflection, and luminosity while carrying its own character.

Whether mounted, suspended, or arrayed as a composition, Ghost pieces appear weightless, their sculptural presence floating effortlessly like light itself suspended in air.

Ghost is more than lighting. It is a living sketch of illumination, an artwork that inspires wonder, contemplation, and connection.

Color Description

A radiant warm white with a soft, glowing character. At 2400 Kelvin, it glows with the warmth of candlelight gentle, golden, and enveloping. More tender than the stark glare of traditional neon, this colour radiates intimacy and atmosphere. Subtle shifts in brightness trace organic patterns of light, leaving an impression that is luminous, refined, and quietly alive.

Ghost Chandelier, Mini - Neon (5m)

Maintenance Guide Description

Our lights crafted in hand-brushed plated aluminium with acrylic tubes combine tactile warmth with luminous clarity. To preserve their beauty and ensure lasting quality, regular and gentle care is essential.

The hand-brushed plated aluminium should be cleaned with a soft, dry microfiber cloth to remove dust. For deeper cleaning, use a slightly damp cloth with mild, pH-neutral soap, wiping gently along the direction of the brushing to maintain the surface's subtle texture. Avoid abrasive pads, acidic solutions, or metal polishes, as these may damage the plated finish or alter its refined appearance.

The acrylic tubes require equally careful maintenance. Dust regularly with a soft microfiber cloth, and if necessary, clean with warm water and a small amount of mild soap. Dry immediately with a clean, lint-free cloth to preserve their luminous clarity. Do not use alcohol, solvents, or abrasive cleaners, as these can cause scratches or clouding.

Always switch off and unplug the light before cleaning, and avoid exposing the finishes to excessive humidity or direct water contact. With simple, consistent care, the hand-brushed plated aluminium will retain its crafted elegance, and the acrylic tubes will continue to radiate their soft, glowing presence ensuring your lamp remains timeless for years to come.

Materials Description

Our lights combine the tactile refinement of hand-brushed plated aluminium with the luminous clarity of acrylic tubes. The aluminium is plated in carefully developed finishes, then brushed by hand to create subtle variations in tone and texture details that make each piece unique. Its surface carries both resilience and warmth, a crafted metal elevated by human touch.

In dialogue with this, the acrylic tubes introduce a sense of lightness and radiance. Their crystalline transparency captures and diffuses light, softening the solidity of metal with a glowing clarity. Together, the two materials create a balance of strength and luminosity, weight and air, precision and atmosphere.

The result is a composition where crafted detail meets ethereal light lighting that is as much sculpture as function, designed to remain timeless in both expression and presence.